

# Education Priorities for the 2020 Legislature

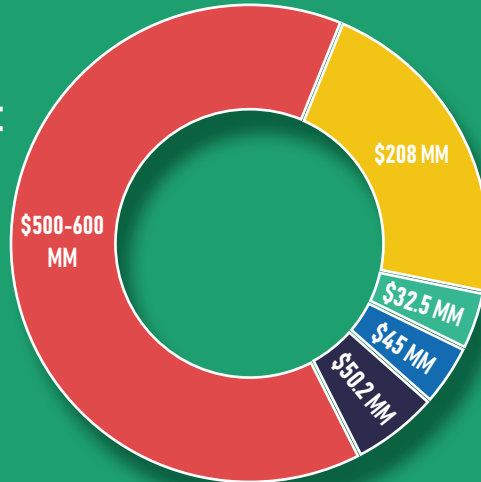


## EDUCATION FUNDING

### \$900 Million Student Investment

(About \$1,234 per student)

- Teacher Compensation\*
- 6% WPU Increase
- Teacher Induction Programs
- Teacher Scholarships
- Enrollment Growth



### Other Funding Issues:

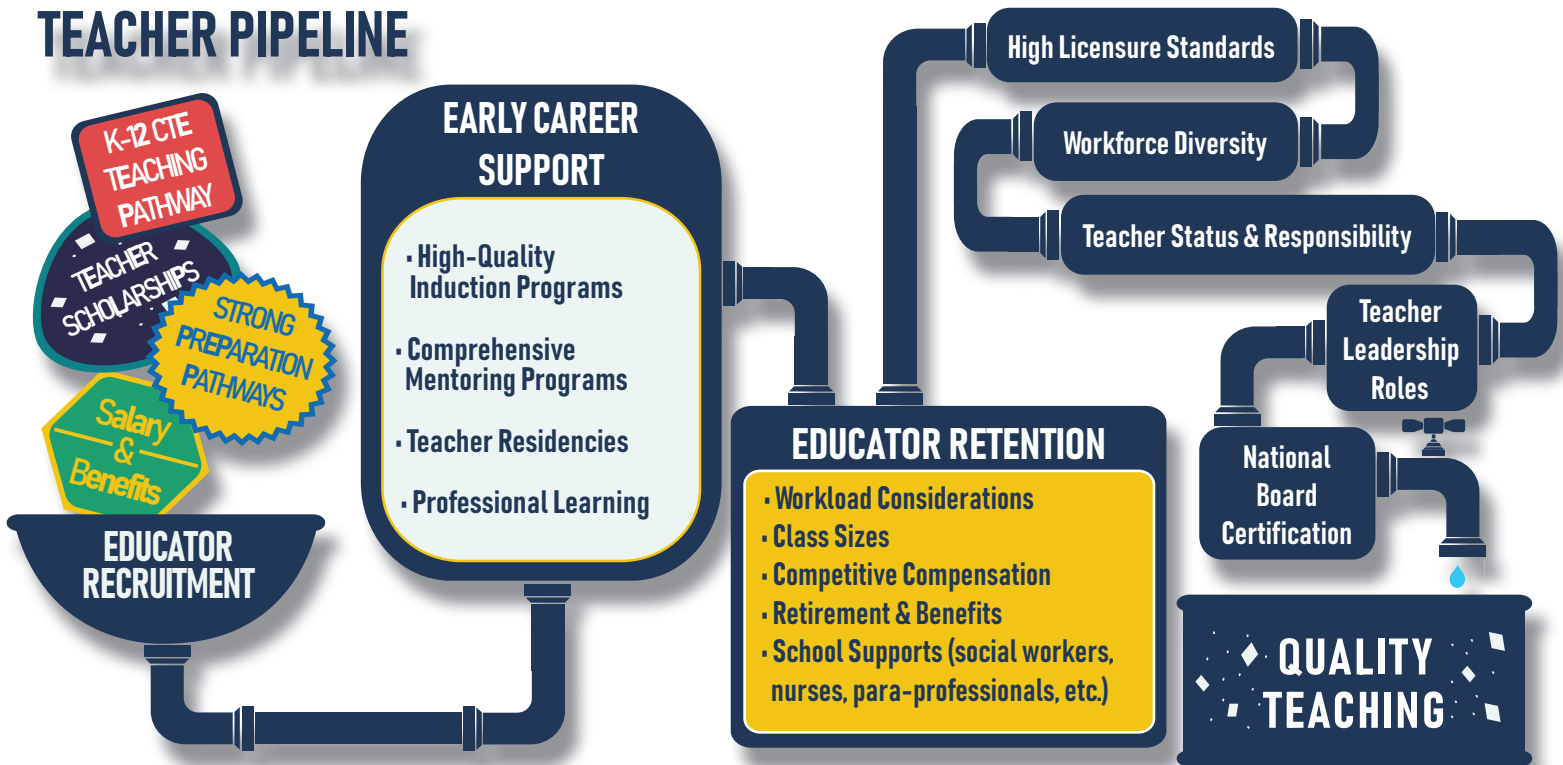
**Tax Policy:** Ensure sustainable, long-term, equitable and GROWING education revenue sources.

**Constitution:** Safeguard public education revenue as provided by the Utah constitutional guarantee directing income tax to education.

**Privatization:** Oppose schemes to funnel public ed money to personal student accounts or private entities where taxpayer accountability is lost.

\*As recommended in the Envision Utah *A Vision For Teacher Excellence* report and adopted by the Governor's Education Excellence Commission.

## TEACHER PIPELINE



## EDUCATION POLICY

- Strengthen accountability standards for charter and online schools consistent with neighborhood schools, including student performance, governance, educator evaluation and financial accountability.
- Support direct, non-partisan election of school board members.
- Eliminate the misuse of student test scores to grade schools and impose consequences on schools.
- Ease the overwhelming workload heaped on Utah teachers by reducing the number of education bills and limiting the number of mandated initiatives.

# A LONG-TERM Vision for Public Education

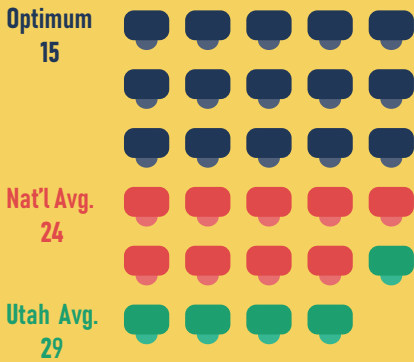


**More Resources = Improved Results**  
Public education requires a sustainable and **GROWING** revenue source. The UEA proposes a long-term funding focus on four major areas:

(Example potential investments included below for illustrative purposes)

## INDIVIDUALIZED STUDENT ATTENTION

Ensure students' individual learning needs are met.  
Reduce the number of students per classroom to research-based optimums.



Estimated annual cost: \$1.1 billion  
(\$612 million K-6 only)

Expand paraeducators to all Utah elementary classrooms.

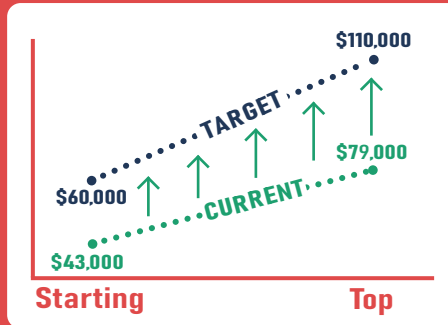


Estimated annual cost: \$312 million

## ADDRESS THE TEACHER SHORTAGE

Increase salaries to start at \$60K and grow to \$110K over a career.\*

Provide more scholarships for prospective teachers.\*



Estimated annual cost: \$535 million



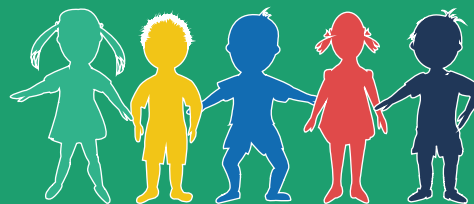
Estimated annual cost: \$45 million

## STUDENT EQUITY

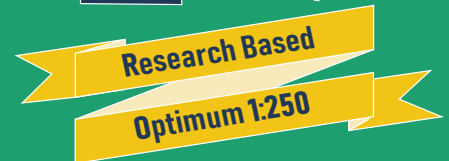
Ensure equitable education access for all Utah students.

Ensure access to high-quality pre-school and extended kindergarten programs.†

Increase school counselors per student to national standard optimum of 1:250.†



Estimated annual cost: \$150 million



Estimated annual cost: \$130 million

## STUDENT HEALTH AND SAFETY

Ensure student health and school safety for students and staff.

Create trauma-informed schools through evidenced-based curriculum and training.



Estimated annual cost: \$5 million

Increase student access to school psychologists, social workers and special ed teachers.†

|   | CURRENT | TARGET |
|---|---------|--------|
| <b>PSYCHOLOGISTS</b>  | 1:1950  | 1:500  |
| <b>SOCIAL WORKERS</b>   | 1:3000  | 1:250  |
| <b>SPECIAL ED TEACHERS</b><br><small>(Per SpEd student)</small> | 1:35    | 1:25   |

Estimated annual cost: \$285 million

\*A Vision for Teacher Compensation, Envision Utah 2019

† Governor's Utah Education Roadmap, 2018-2027